



Your next home in the Top-tier Frontier

**98.7**

literacy rate and is dubbed  
as the center of education in Mindanao

## Regional Center

for trade, commerce,  
and industry in Mindanao

**1.3M**

tourist arrivals (2021)



Davao City



## Fruit Basket of the Philippines

one of the world's leading producers  
and exporters of banana, papaya,  
mangosteen and even flowers

**3rd**

safest city in Southeast Asia (2021)

**2,444 sqm**

the country's largest city in terms of land area

# Home to World-Class Destinations



## Philippine Eagle Center

The Philippine Eagle Center is home to 36 Philippine Eagles; one of the world's largest eagles.



## Mt. Apo

The highest-mountain in the Philippine Archipelago and 24th-highest peak of an island on Earth.



## Eden Nature Park

One of the most popular and most visited mountain resorts that offers a plethora of exciting things to do and heart pumping adventures.



## Samal Island

Samal Island is known as the largest resort city in the Philippines because it's home to over 30 resorts dotted in its white-sand beaches and islands.



## Harmonious Blend of Urban Living :

Camella Manors Frontera raised the standard of premium condo living with its exclusive pine-filled community, resort-inspired backdrop, and strategic location with convenient access to Davao's business and lifestyle centers.

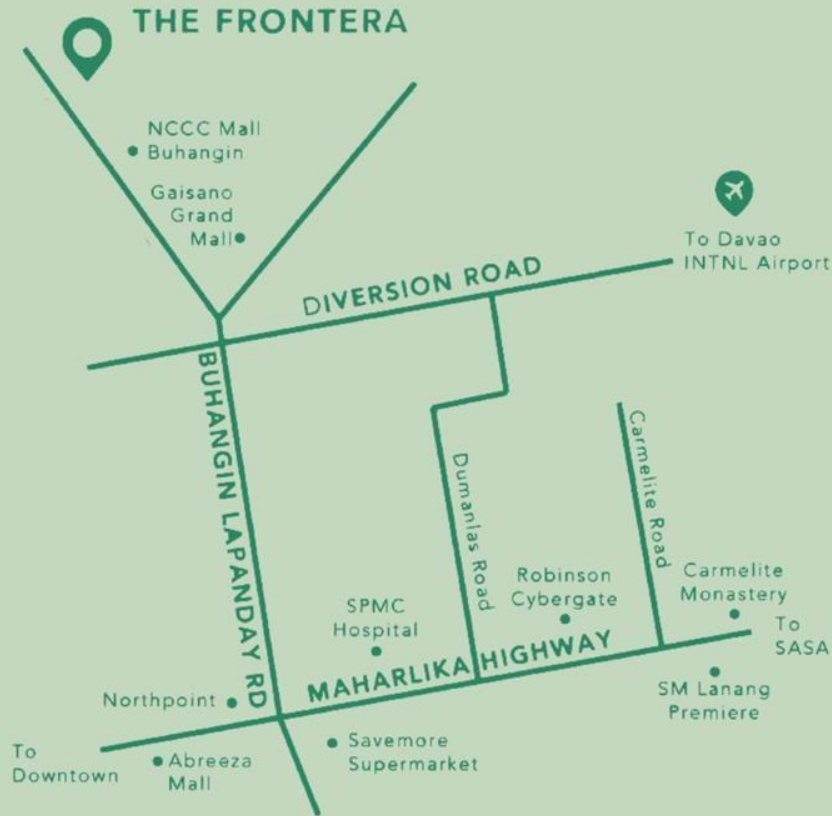


The harmonious blend of sub-urban and well-preserved nature awaits you here in the center point of the King City of the South.

# City life meets suburban pleasure



you deserve a relaxing home where the zest of pine scents embraces you in your front yard, and lifestyle hubs are just a stone's throw away—a home where the city life meets the suburban feels. That is what Camella Manors Frontera stands for.



Location: **Manuel M. Garcia Road,**  
**Buhangin, Davao City**

## LANDMARKS

### Lifestyle Centers

NCCC Mall Buhangin  
Gaisano Grand City Gate Mall  
Robinsons Cybergate  
Abreeza Mall  
SM Lanang Premier

### Leisure Hubs

Panorama Summit Hotel  
D'Leonor Inland Resort and Adventure Park  
Rancho Palos Verdes  
Davao Crocodile Park

### Education

Davao Marine Merchant Academy  
University of Immaculate Conception  
University of Southeastern Philippines  
Jose Maria College  
Lyceum of the Philippines University Davao  
Ateneo de Davao University

### Health

Buhangin Medical Clinic  
Southern Philippines Medical Center  
Lanang Doctors Hospital

### Transportation

Davao International Airport  
Samal Ferry Wharf  
Davao Diversion Road

Be closer to new adventures



*11 minutes to*  
DAVAO INTERNATIONAL AIRPORT



Be closer to urban excitement



## Shopping Malls

- 3 mins NCCC Mall Buhangin
- 3 mins Gaisano Grand Citygate Mall
- 11 mins Abreeza Mall
- 13 mins Robinsons Cybergate
- 17 mins SM Lanang Premier





Be closer to endless possibilities



## *Schools & Universities*

- 2 mins Davao Marine Merchant Academy
- 7 mins University of the Immaculate Concepcion
- 9 mins University of Southeastern Philippines
- 12 mins Jose Maria College
- 14 mins Lyceum of the Philippines University
- 14 mins Ateneo De Davao University



# Be closer to future developments



## Davao Bypass Road

46km. bypass road which cuts travel time from 2hrs to 45mins. going to southern and northern parts of the city.

**3 KM | 8 mins away**



## KJC Kingdome Arena

Soon to be the world's biggest arena with a maximum of 75,000 seating capacity

**5.7 KM | 12 mins away**



## Davao-Samal Bridge

The two-way, four-lane bridge will cut travel time from Davao City to Island Garden City of Samal to 5 minutes, from 23 to 30 minutes via roll-on/roll-off ferry

**9 KM | 17 mins away**

Property Size : **1.8 hectare**

No. of Buildings : **6 buildings**

No. of Floors: **8-floors**



**SITE DEVELOPMENT PLAN**

**Bldg 1: Zinnia**

# YOUR WELL-BEING MATTERS

Clubhouse Lounge  
Infinity Pool  
Kiddie Pool  
Event Hall  
Gym  
Alfresco Fitness Park  
Meditation Garden  
Picnic Hubs  
Sandbox Play Pit  
Jogging Trails  
Ampitheater Pews  
24/7 Electric Fence  
Commercial Strip



 **Camella**  
MANORS FRONTERA

# THE CLUBHOUSE



# KIDDIE POOL



# INFINITY POOL

 **Camella**  
MANORS FRONTERA



# AL FRESCO FITNESS PARK





# POCKET GARDEN



# SANDBOX AND PEW



# JOGGING TRAILS



# UNPARALLELED COMFORT



## STUDIO UNIT

23.76 sqm

## STUDIO PRIME UNIT

28.55 sqm

 **Camella**  
MANORS FRONTERA



DINING

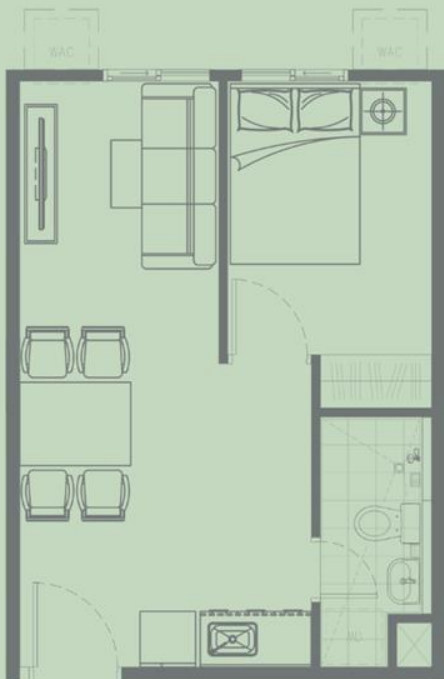


BEDROOM



LIVING

# UNPARALLELED COMFORT



**1 BEDROOM UNIT**  
30.36 sqm

 **Camella**  
MANORS FRONTERA



DINING

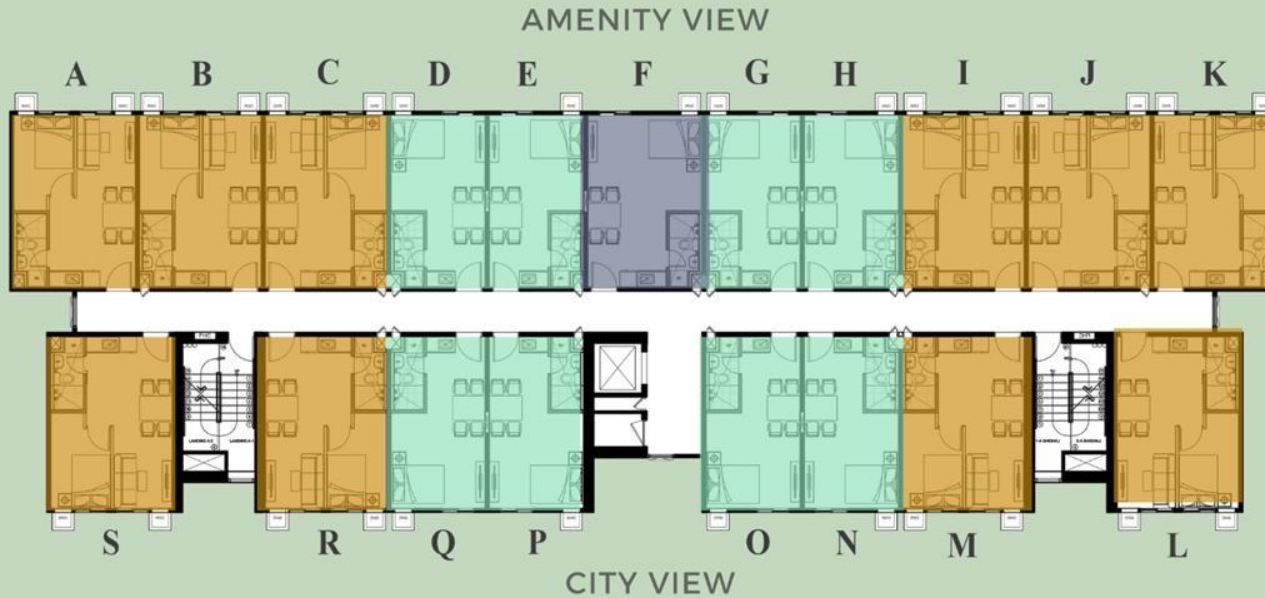


BEDROOM



LIVING

# BUILDING 1: ZINNIA TYPICAL FLOOR PLAN



## LEGEND:

-  23.76 sqm Studio Unit
-  28.55 sqm Studio Prime Unit
-  30.36 sqm 1BR Unit

Fur babies are part of the family



Home to world-class lifestyle experience



Discover world-class dining and retail store experience located in a prime master-planned community.  
Experience top-tier condo living. Live world-class at Camella Manors Frontera.



One click to modern living





SMART CONDO

manage all of your  
device **from one place**





SMART CONDO

maximize  
home security





SMART CONDO

energy saving  
& cutting edge  
switches





SMART CONDO

Automated  
powered thermostat





SMART CONDO

Digital lock





Experience  
greater heights

high-ceiling

# TOP-TIER FRONTIER LIFESTYLE



EAT



WORK



REST



PLAY





Your next home in the Top-tier Frontier