



## AMENITIES

Let life flow gracefully. Galleria Residences offer an almost 180-meter long amenity deck that stretches across the three towers. With over 30 recreational facilities, Galleria Residences gives you delightful nooks that will suit whatever mood you are in.

### TOWER 1

#### INDOOR AMENITIES:

- Spa/Sauna Massage
- Fitness Gym
- Function Room
- Private Theater
- Children's Playroom
- Open Lounge

#### OUTDOOR AMENITIES:

- Lap & Kiddie Pools
- Garden Area
- Outdoor Playground

### TOWER 2

#### INDOOR AMENITIES:

- Game Station
- Virtual Golf
- Health Bar
- Clinic
- Dance Studio
- Martial Arts Studio
- Boxing Room
- Function Room
- Aerobics and Yoga Room

#### OUTDOOR AMENITIES:

- Open Lounge
- Garden Area

### TOWER 3

#### INDOOR AMENITIES:

- Game Room
- Videoke Room
- Bar Lounge
- Meeting Room
- Library
- Wi-Fi Lounge
- Multi-purpose Hall/Badminton Court
- Arts and Crafts Room

#### OUTDOOR AMENITIES:

- Pre-function Hall
- Sky Deck
- Garden Area

For training purposes only. All details herein are subject to change without prior notice and do not constitute any part of a contract or offer.

FOR TRAINING PURPOSES ONLY



Artist's Perspective of Kiddie Pool

For training purposes only. All details herein are subject to change without prior notice and do not constitute any part of a contract or offer.



FOR TRAINING PURPOSES ONLY



Artist's Perspective of Lap Pool and Deck

For training purposes only. All details herein are subject to change without prior notice and do not constitute any part of a contract or offer.



FOR TRAINING PURPOSES ONLY



Artist's Perspective of Private Theater

For training purposes only. All details herein are subject to change without prior notice and do not constitute any part of a contract or offer.



FOR TRAINING PURPOSES ONLY

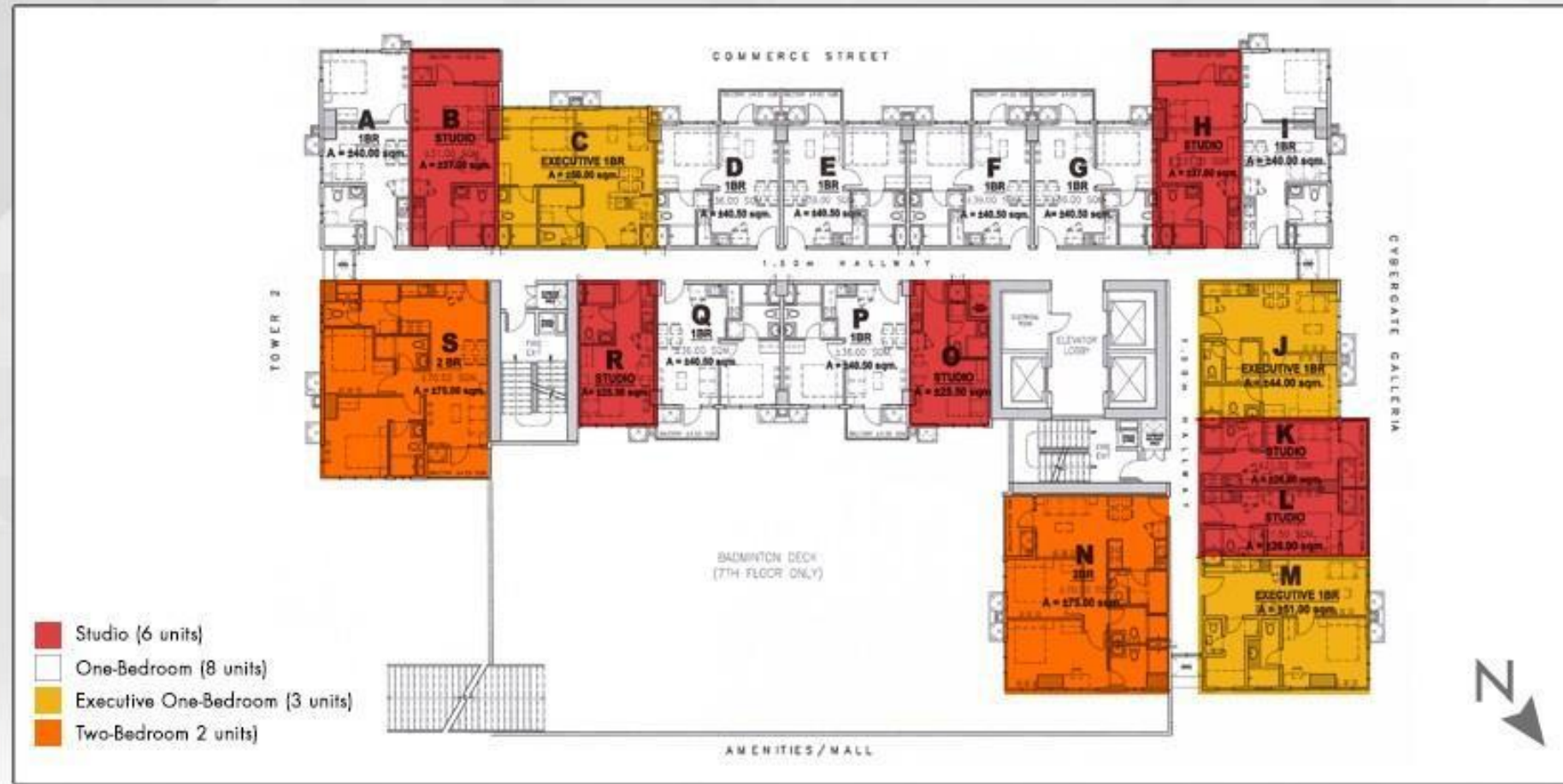


Artist's Perspective of Fitness Gym

For training purposes only. All details herein are subject to change without prior notice and do not constitute any part of a contract or offer.



FOR TRAINING PURPOSES ONLY



- Studio (6 units)
- One-Bedroom (8 units)
- Executive One-Bedroom (3 units)
- Two-Bedroom (2 units)

### Typical Floor Plan (Tower 3)

Number of Residential Floors	16	Floors
Total Number of Units	299	Units
Studio Unit	6	Units
One-Bedroom Unit	8	Units
Executive One-Bedroom Unit	3	Units
Two-Bedroom Unit	2	Units
<b>Total Units/Floor</b>	<b>19</b>	<b>Units</b>

For training purposes only. All details herein are subject to change without prior notice and do not constitute any part of a contract or offer.



FOR TRAINING PURPOSES ONLY



Actual Photo of One Bedroom Unit

### UNIT DETAILS (TOWER 3)

UNIT TYPE	APPROX. UNIT SIZES*	NO. OF UNITS
Studio	25.50 - 37.00 sqm	94
One-Bedroom	40.00 - 40.50 sqm	126
Executive One Bedroom	44.00 - 51.00 sqm	48
Two-Bedroom	75.00 sqm	31
		<hr/> 299

\* Includes balcony area where applicable

For training purposes only. All details herein are subject to change without prior notice and do not constitute any part of a contract or offer.

FOR TRAINING PURPOSES ONLY



## Studio Unit

UNIT B (TOWER 3)

7<sup>TH</sup> - 22<sup>ND</sup> FLOOR

Approx. 25.50 - 37.00 sqm

### UNIT AREA DIMENSIONS

- Living / Dining / Bedroom ± 18.03 sqm
- Kitchen ± 6.72 sqm
- T&B ± 6.25 sqm
- Balcony ± 6.00 sqm

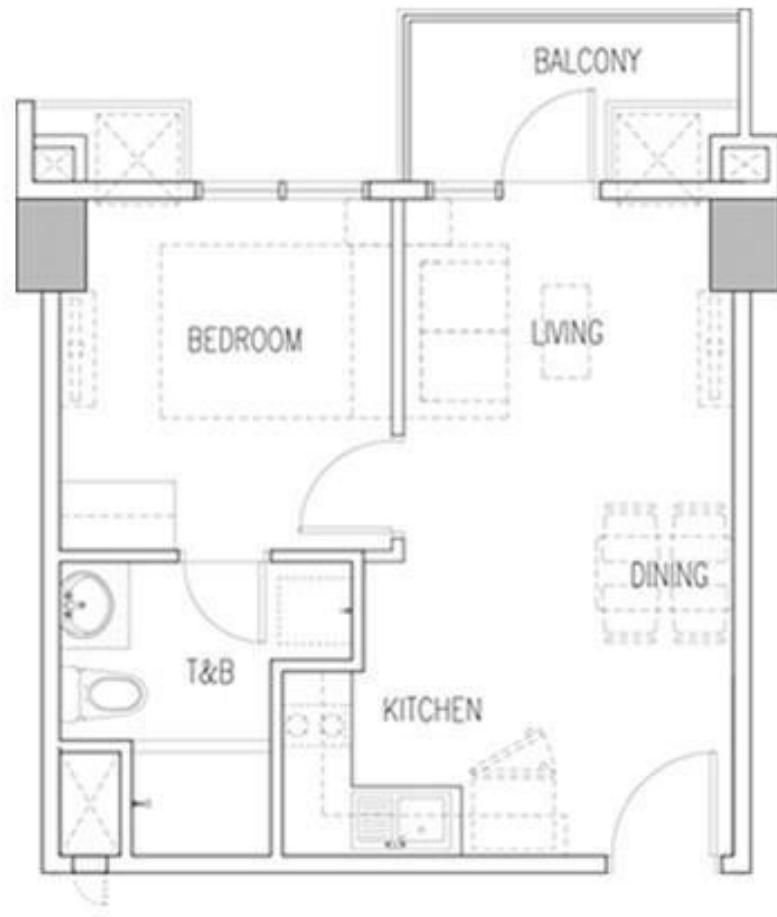
TOTAL ± 37.00 sqm



For training purposes only. All details herein are subject to change without prior notice and do not constitute any part of a contract or offer.



FOR TRAINING PURPOSES ONLY



## One-Bedroom with Balcony

UNIT D (TOWER 3)

7<sup>TH</sup> - 22<sup>ND</sup> FLOOR

Approx. 40.00 - 40.50 sqm

### UNIT AREA DIMENSIONS

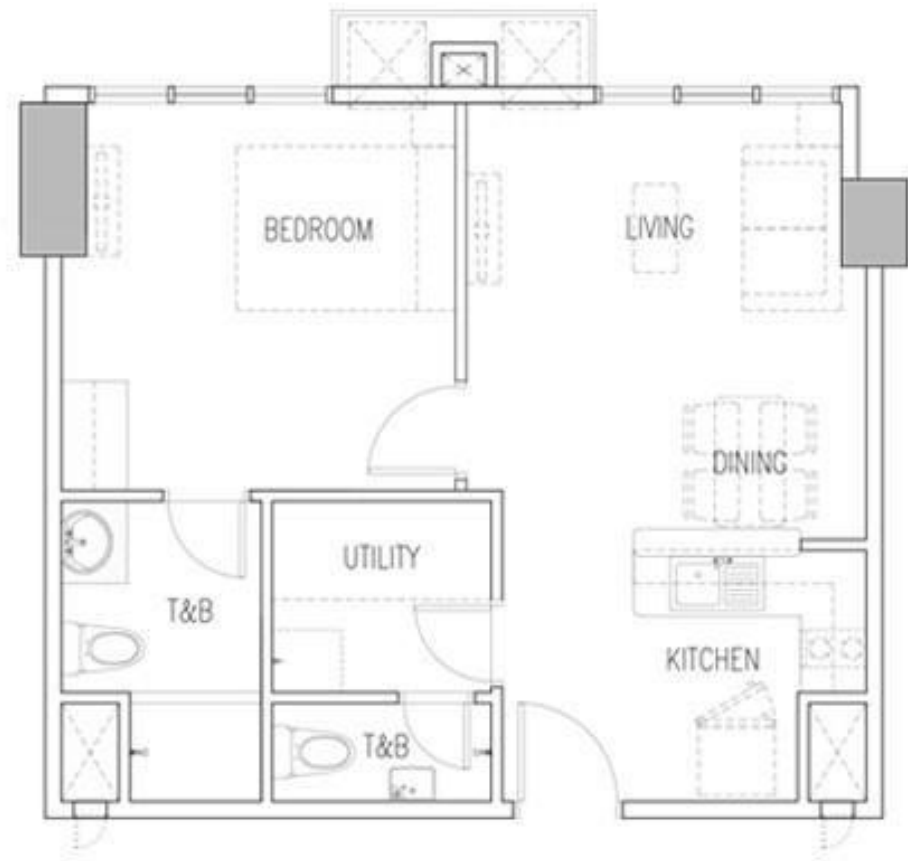
- Living ± 7.42 sqm
- Dining ± 4.86 sqm
- Kitchen ± 7.94 sqm
- Bedroom ± 9.75 sqm
- Common T&B ± 6.03 sqm
- Balcony ± 4.50 sqm

TOTAL ± 40.50 sqm



For training purposes only. All details herein are subject to change without prior notice and do not constitute any part of a contract or offer.

FOR TRAINING PURPOSES ONLY



## Executive One-Bedroom Unit

UNIT C (TOWER 3)

7<sup>TH</sup> - 22<sup>ND</sup> FLOOR

Approx. 44.00 - 51.00 sqm

### UNIT AREA DIMENSIONS

• Living	±	8.92 sqm
• Dining	±	6.60 sqm
• Kitchen	±	8.62 sqm
• Bedroom	±	13.96 sqm
• Common T&B	±	6.20 sqm
• Utility Room	±	5.70 sqm
<b>TOTAL</b>	<b>±</b>	<b>50.00 sqm</b>



For training purposes only. All details herein are subject to change without prior notice and do not constitute any part of a contract or offer.

FOR TRAINING PURPOSES ONLY



## Two-Bedroom Unit

UNIT N (TOWER 3)

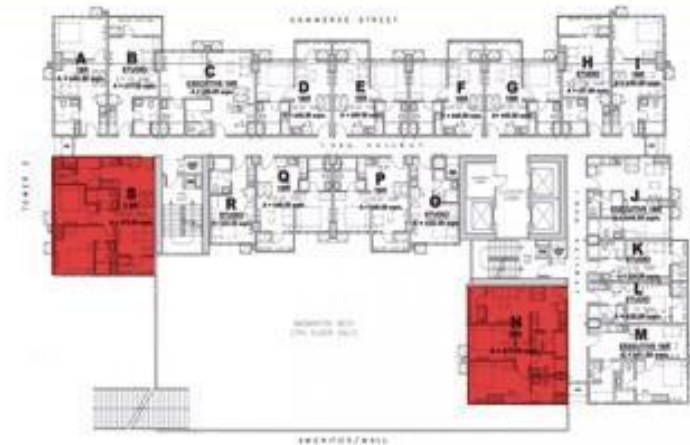
7<sup>TH</sup> - 22<sup>ND</sup> FLOOR

Approx. 75.00 sqm

### UNIT AREA DIMENSIONS

- Living ± 15.15 sqm
- Dining ± 4.10 sqm
- Kitchen ± 6.95 sqm
- Master Bedroom ± 16.32 sqm
- Bedroom 1 ± 11.16 sqm
- Utility ± 5.46 sqm
- Toilet 1&2 ± 11.36 sqm
- Balcony ± 4.50 sqm

TOTAL ± 75.00 sqm



For training purposes only. All details herein are subject to change without prior notice and do not constitute any part of a contract or offer.

FOR TRAINING PURPOSES ONLY



Artist's Perspective of Studio Unit

### RESIDENTIAL FEATURES

- Entrance panel door with viewer
- Intercom per unit connected to the reception counter
- Automatic smoke detectors, fire alarm and sprinkler system in all units
- Provision for:
  - Individual electric and water meter
  - Telephone line at living area and master's bedroom
  - Cable TV line at living area and bedrooms
  - Ventilation for kitchen and toilet
  - Window-type air conditioner provision at all units
  - Hot water line (water heater excluded) at kitchen and toilet
  - Washer / dryer
- Standby power at selected areas in residential units:
  - One (1) ceiling light for living area and each bedroom
  - One (1) convenience outlet for living and dining areas
  - One (1) convenience outlet for refrigerator
  - One (1) convenience outlet for each bedroom

For training purposes only. All details herein are subject to change without prior notice and do not constitute any part of a contract or offer.

FOR TRAINING PURPOSES ONLY



Artist's Perspective of One Bedroom Living Area

RESIDENTIAL UNIT FINISHES AND DELIVERABLES

	Living/Dining	Bedroom	Kitchen	Toilet & Bath
FLOOR	Homogeneous Tiles	Laminated Wood	Homogeneous Tiles	Homogeneous Tiles
WALL	Painted Plastered Wall	Painted Plastered Wall	Painted Plastered Wall	Combination of Painted Plastered Wall and Homogeneous Tiles
CEILING	Painted Slab Soffit (No Ceiling)	Painted Slab Soffit (No Ceiling)	Painted Gypsum Board	Painted Gypsum Board
OTHER DELIVERABLES	N/A	Bedroom Closet	Single-Point Water Heater Provision (water heater excluded) Granite countertop and splashboard Overhead and undercounter cabinets Outlet for: • Refrigerator - 230W • Cooktop - 5500W	Multi-Point Water Heater Provision (water heater excluded) Lavatory with Granite Countertop

For training purposes only. All details herein are subject to change without prior notice and do not constitute any part of a contract or offer.



### Top Reasons why Galleria Residences is the best option for you

- Residential building design featuring modern, timeless architecture, integrating environment friendly concepts
- Wide array of recreational and lifestyle amenities that provide comfort, relaxation and wellness for a resort-like living experience
- Strategically located within Cebu's emerging district with easy access to major thoroughfares
- Fully-integrated within Robinsons Galleria Cebu Complex, a landmark mixed-used complex and lifestyle destination with unique green and water installations and features
- Efficient living spaces and fewer units per floor provide adequate personal space, maximizing investment

For training purposes only. All details herein are subject to change without prior notice and do not constitute any part of a contract or offer.

