

- "Dayon"
- 1st Amenity Floor
- 30 Residential Units
- Hallways, Lifts & Fire Exits

SOUTHWEST VIEW



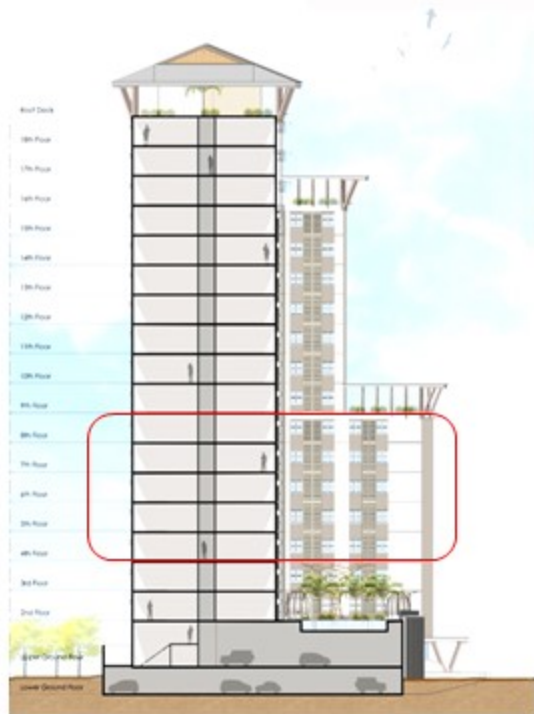
NORTHWEST VIEW

- STUDIO A
- STUDIO B
- STUDIO C
- STUDIO D
- COMMON AREA

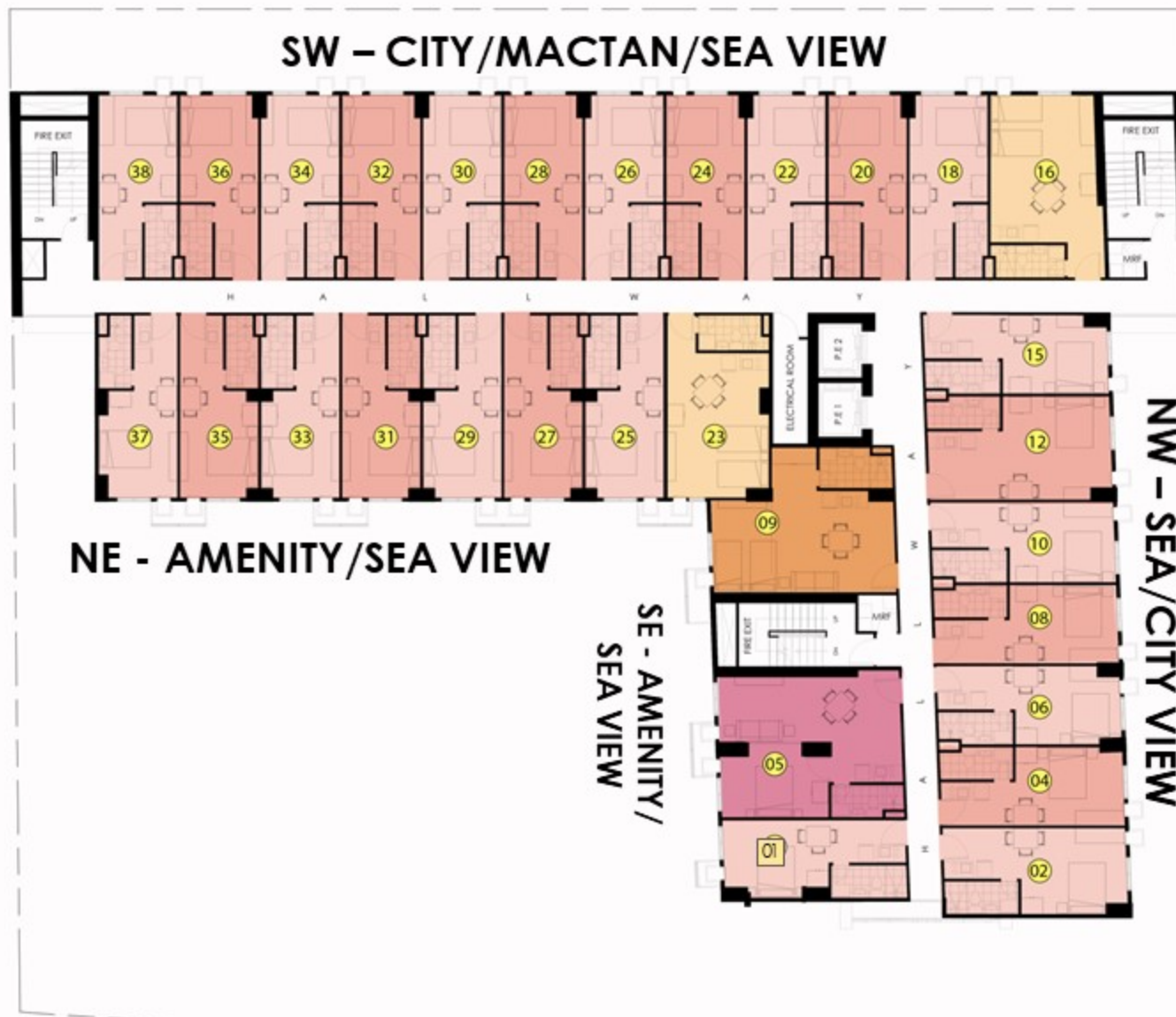
AMENITY VIEW



2nd Floor Plan



- 30 Residential Units per Floor
- Hallways, Lifts & Fire Exits



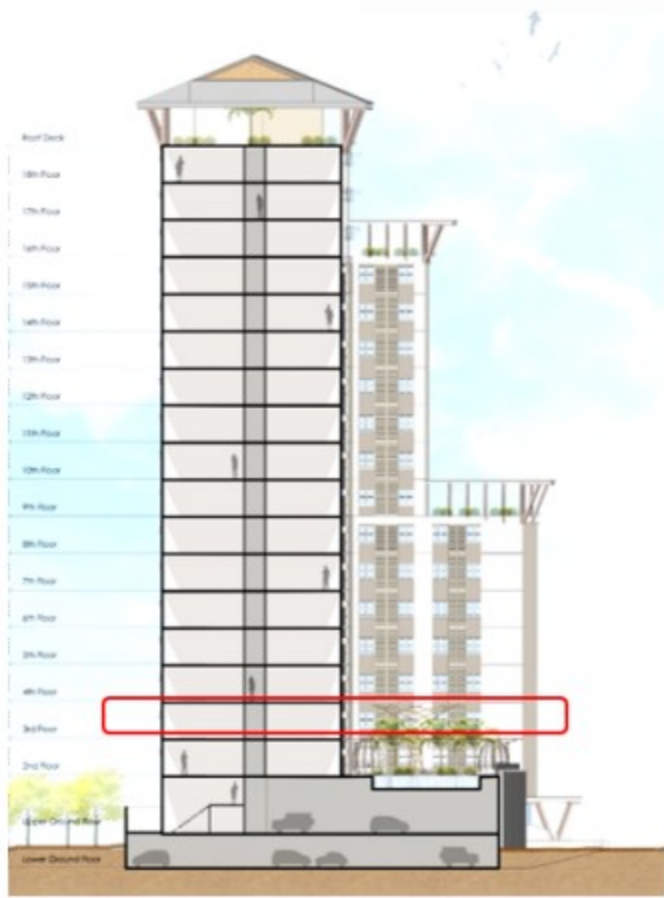
- STUDIO A
- STUDIO B
- STUDIO C
- STUDIO D
- COMMON AREA



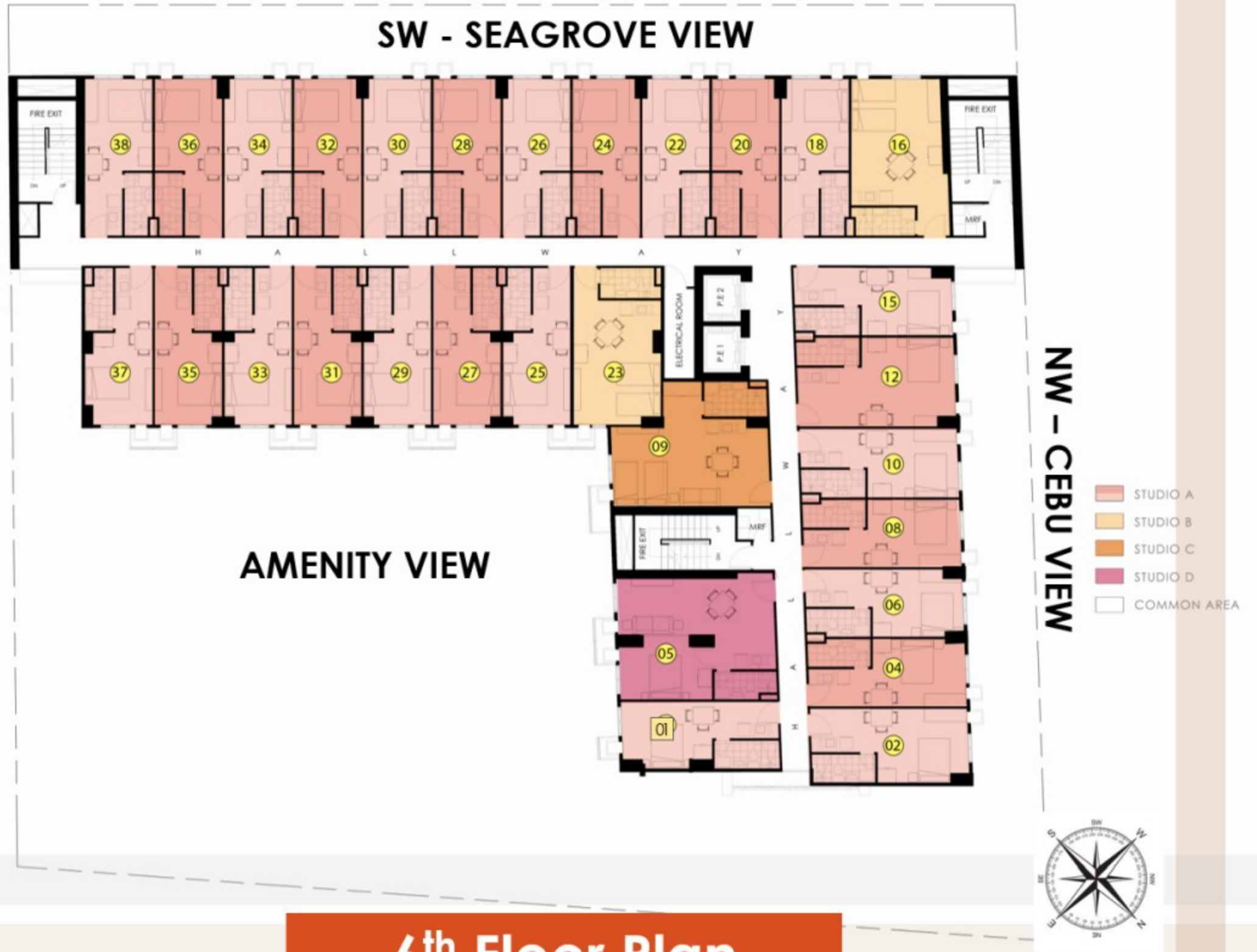
3rd to 5th Floor Plan

*Views may vary depending on the floor

*For Announcement Purposes Only



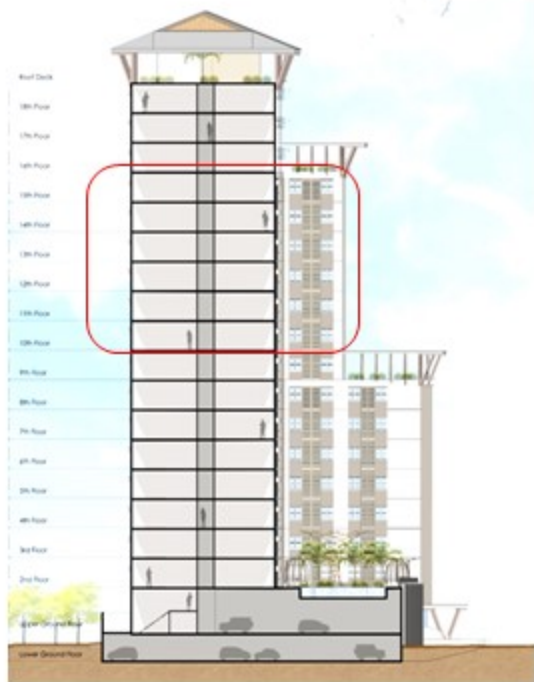
- 30 Residential Units
- Hallways, Lifts & Fire Exits



6th Floor Plan

*For Announcement Purposes Only

balai
By BE RESIDENCES



• 25 Residential Units per Floor



10th to 16th Floor Plan

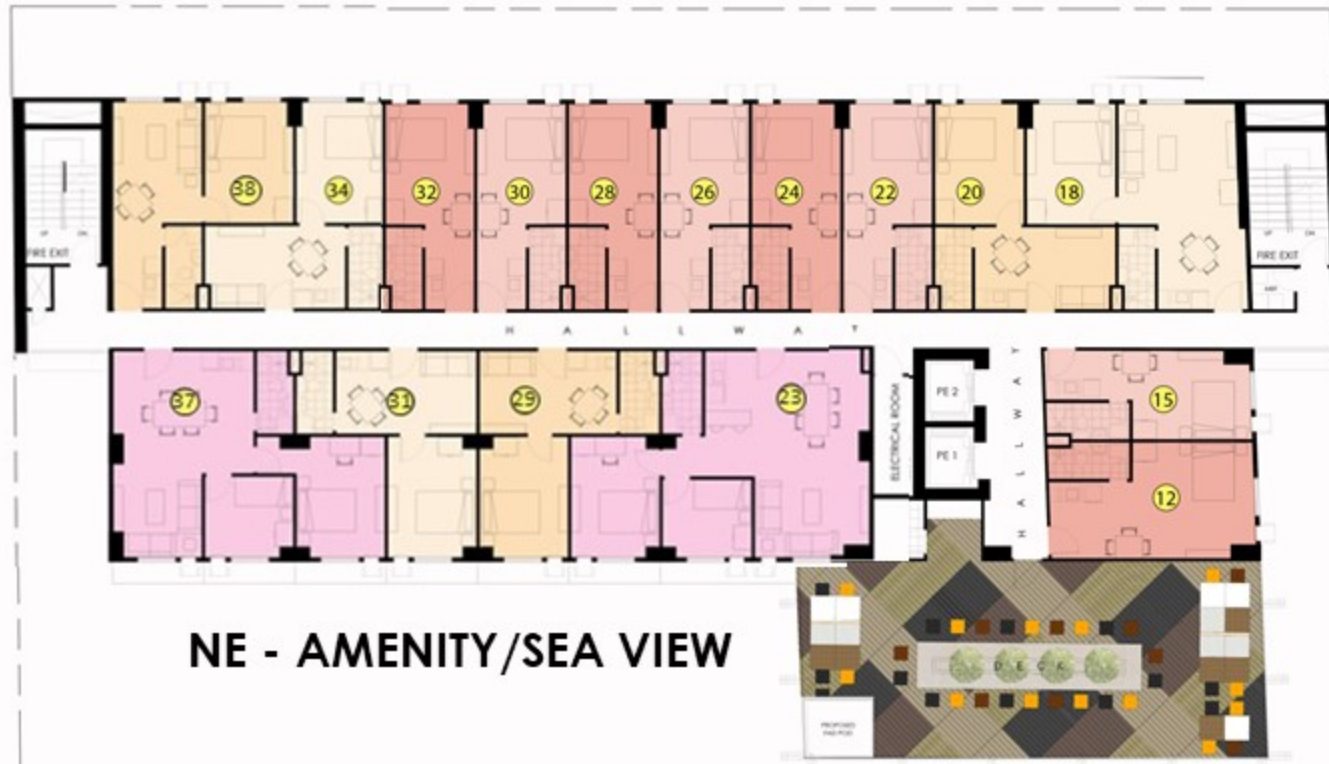
*For Announcement Purposes Only

BE Residences develops its properties according to plans and specifications, however, we reserve the right to alter specifications when necessary to best serve the interest of the customer.



- "Obra"
- 3rd Amenity Floor
- 17 Residential Units

SW – CITY/MACTAN/SEA VIEW



NW – SEA/CITY VIEW

- STUDIO A
- STUDIO B
- COMMON AREA

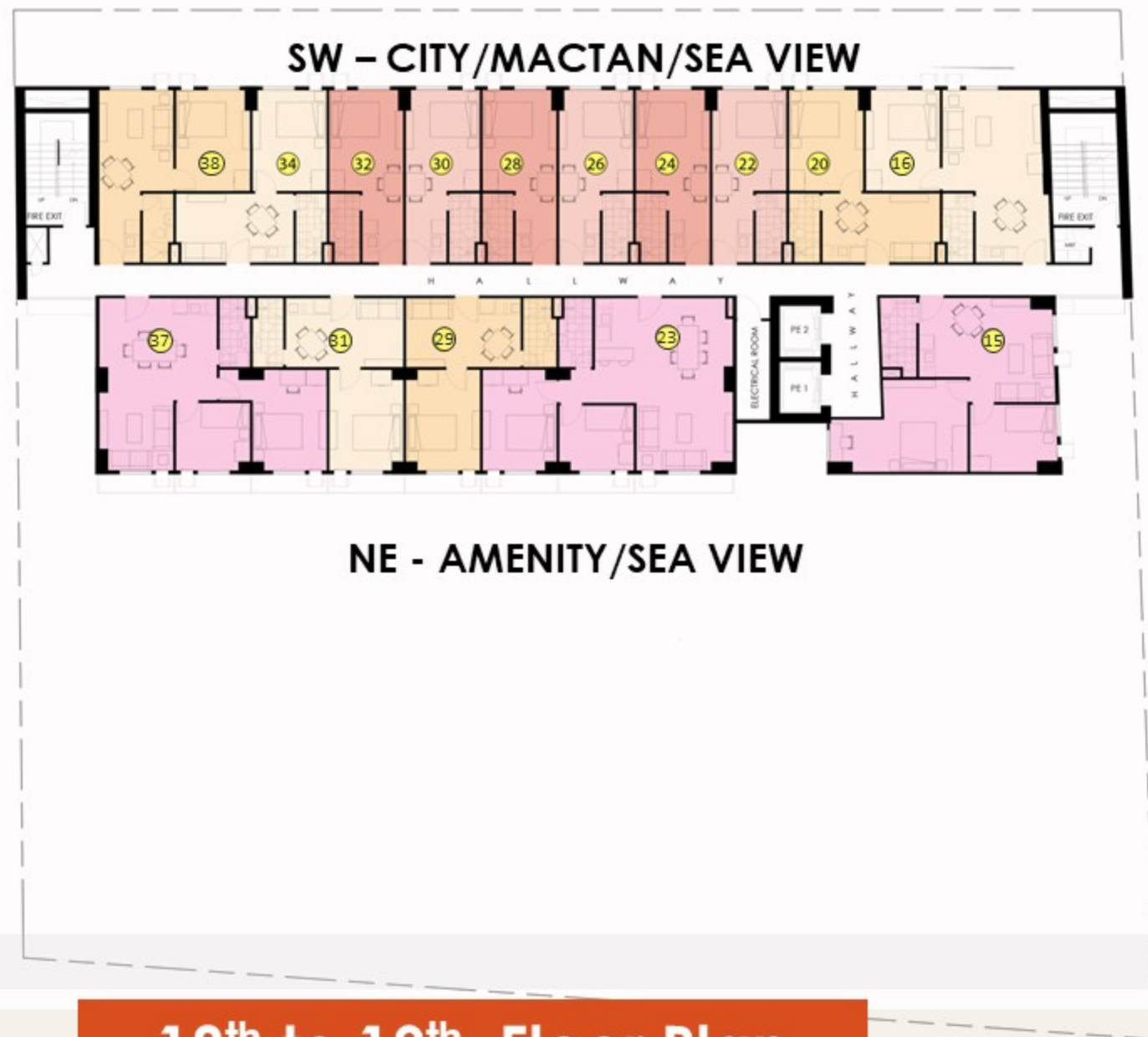


17th Floor Plan

*For Announcement Purposes Only



- Lowest Density Floor
- 15 Residential Units
- 1 and 2 Bedroom Units



- STUDIO A
- 1 BEDROOM
- 2 BEDROOM
- COMMON AREA



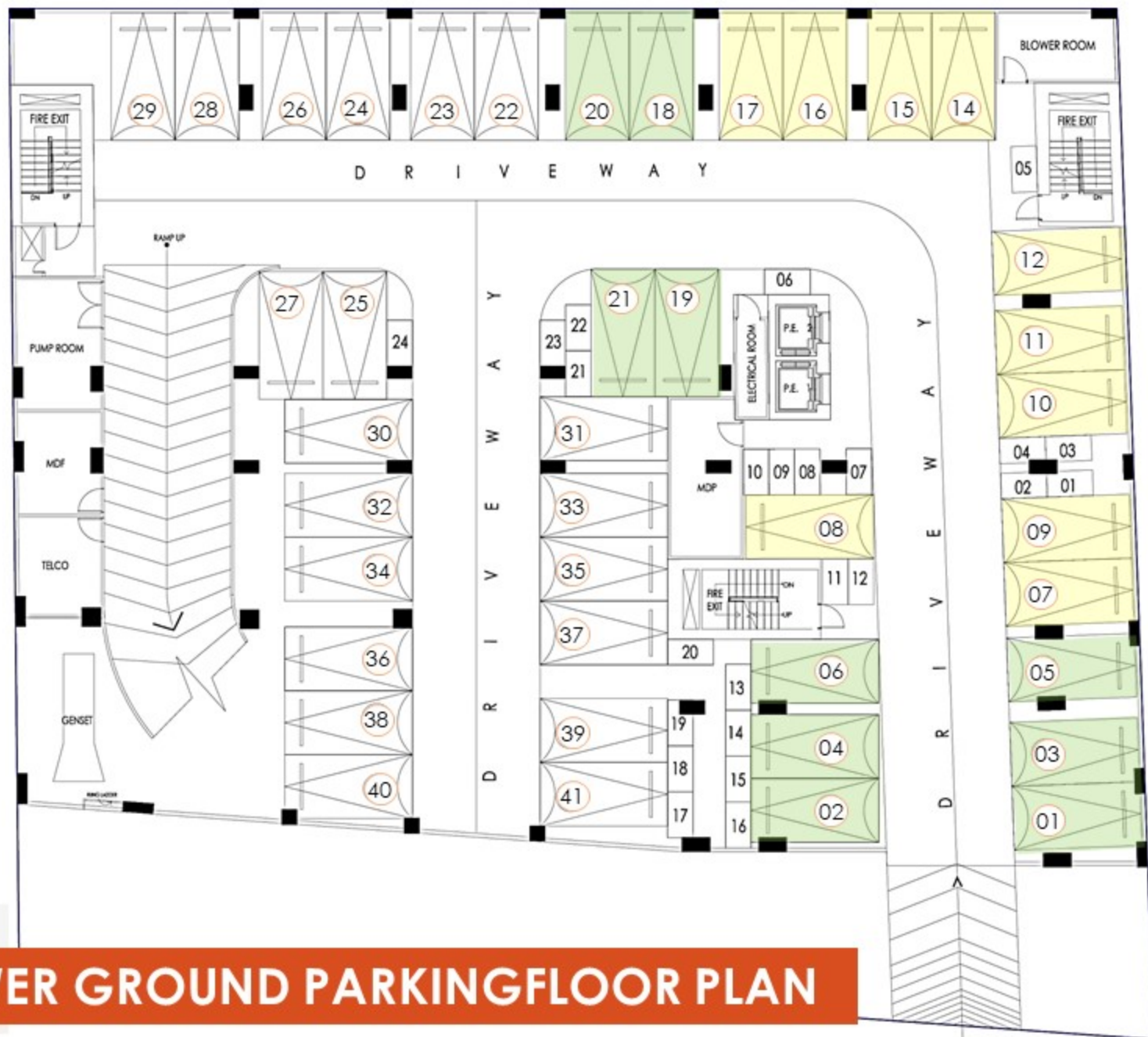
18th to 19th Floor Plan

*For Announcement Purposes Only



- 39 Car Parking Slots
- 28 MC Parking Slots
- 1 PWD Parking Slot
- Utilities & Driveways

- Premium 1
- Premium 2



LOWER GROUND PARKING FLOOR PLAN

*For Announcement Purposes Only



- 2nd F of 17 Residential Units (Yarden)
- 26 Storage Space



UPPER GROUND – 2nd FLOOR PLAN

*For Announcement Purposes Only



- 11 Car Parking Slots
- 17 Residential Units (Yarden)
- 25 Storage Space
- Lobby, Admin & Lift



UPPER GROUND – 2nd FLOOR PLAN

*For Announcement Purposes Only