

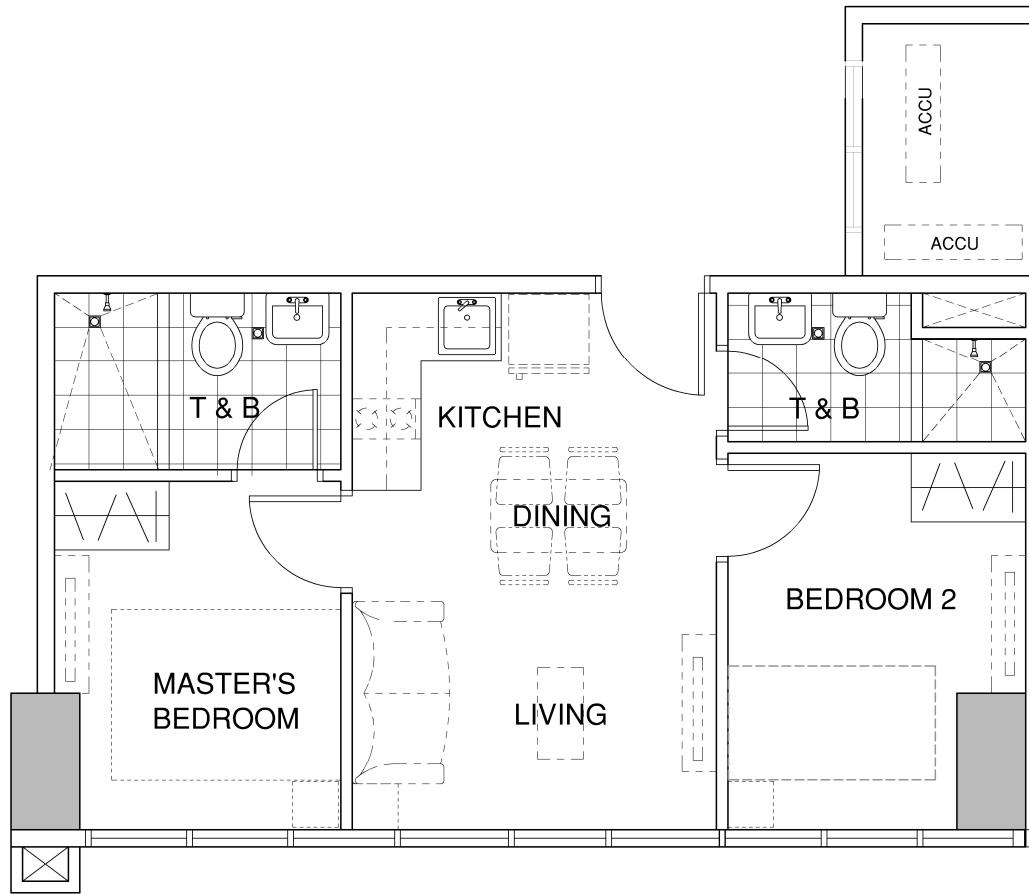
## SECOND FLOOR PLAN



While every care has been taken in preparing this material, all plans, details and specifications contained herein are subject to change without prior notice and do not constitute part of any offer or contract. No warranty or representation is made by the Developer as to their accuracy. Furthermore, the Developer reserves the right to alter, deviate or dispense with the plans and specifications referred to herein to comply with certain building requirements such as but not limited to structural, mechanical, electrical, sanitary and plumbing requirements. In the event of alteration or deviation with the plans and specifications referred to herein, the Developer shall be rendered free and harmless from any liability arising therefrom. Furniture, appliances and equipment indicated herein are for illustrative purpose only and are not included in the deliverables.

Some views may currently be unobstructed. However, the Developer does not guarantee unobstructed views due to possible future developments in the neighboring lots.  
All drawings are not to scale.

**ROBINSONS LAND CORPORATION**  
DATE ISSUED: JANUARY 1, 2015  
This supercedes AUGUST 18, 2011 Keyplan.

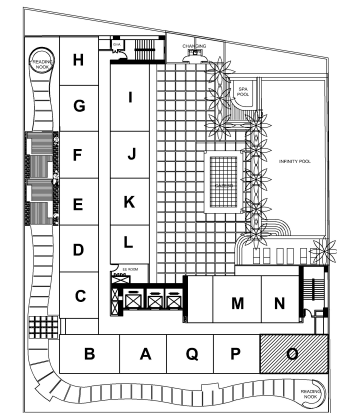


UNIT AREA = 43.50 SQM.

**SECOND FLOOR PLAN  
UNIT O (2 BEDROOM)**

*While every care has been taken in preparing this material, all plans, details and specifications contained herein are subject to change without prior notice and do not constitute part of any offer or contract. No warranty or representation is made by the Developer as to their accuracy. Furthermore, the Developer reserves the right to alter, deviate or dispense with the plans and specifications referred to herein to comply with certain building requirements such as but not limited to structural, mechanical, electrical, sanitary and plumbing requirements. In the event of alteration or deviation with the plans and specifications referred to herein, the Developer shall be rendered free and harmless from any liability arising therefrom. Furniture, appliances and equipment indicated herein are for illustrative purpose only and are not included in the deliverables.*

*Some views may currently be unobstructed. However, the Developer does not guarantee unobstructed views due to possible future developments in the neighboring lots.  
All drawings are not to scale.*



KEY PLAN



February 5, 2024 12:26 PM

**Unit Information**

Tower	AZALEA PLACE	Total Floor Area	43.50 sqm
Floor	2nd	Condominium Area	43.50 sqm
Unit	Unit 020	Balcony Area	0
Unit Status	Available	Garden Area	0
Unit Type	2 BR		

UNIT GROSS PRICE		8,366,175.00
	Other Discounts	15% (1,254,926.25)
		7,111,248.75
Closing Fees (Unit)		426,674.92
Total Net Unit Price		7,537,923.67

**Payment Schedule**

	Percentage	No. of Payments
Spot Payment	10%	3 month(s)
Monthly Amortization	10%	19 month(s)
Balance	80%	23rd month
	100%	

<b>Date</b>	<b>Payment</b>	<b>Unit</b>	<b>Closing Fees</b>	<b>Total</b>
05-Feb-24	RF	80,000.00	0.00	80,000.00
05-May-24	SPOT	631,124.88	0.00	631,124.88 (210,374.96)
16-Jun-24	MA1	37,427.63	0.00	37,427.63
16-Jul-24	MA2	37,427.63	0.00	37,427.63
16-Aug-24	MA3	37,427.63	0.00	37,427.63
16-Sep-24	MA4	37,427.63	0.00	37,427.63
16-Oct-24	MA5	37,427.63	0.00	37,427.63
16-Nov-24	MA6	37,427.63	0.00	37,427.63
16-Dec-24	MA7	37,427.63	0.00	37,427.63
16-Jan-25	MA8	37,427.63	0.00	37,427.63
16-Feb-25	MA9	37,427.63	0.00	37,427.63
16-Mar-25	MA10	37,427.63	0.00	37,427.63
16-Apr-25	MA11	37,427.63	0.00	37,427.63
16-May-25	MA12	37,427.63	0.00	37,427.63
16-Jun-25	MA13	37,427.63	0.00	37,427.63
16-Jul-25	MA14	37,427.63	0.00	37,427.63
16-Aug-25	MA15	37,427.63	0.00	37,427.63
16-Sep-25	MA16	37,427.63	0.00	37,427.63
16-Oct-25	MA17	37,427.63	0.00	37,427.63
16-Nov-25	MA18	37,427.63	0.00	37,427.63
16-Dec-25	MA19	37,427.63	426,674.92	464,102.55
05-Jan-26	BALANCE	5,688,999.00	0.00	5,688,999.00

TOTAL	PHP 7,111,248.75	PHP 426,674.92	PHP 7,537,923.67
-------	------------------	----------------	------------------

Remarks

1. The Developer reserves the right to make corrections resulting from typographical errors.
2. All prices, availability, payment schemes & other details are subject to change without prior notice.
3. All unit areas are approximates and will be finalized during time of turnover.
4. Discounts are conditioned upon buyer's compliance with his obligations including payments & documents.
5. Closing Fees, which are estimated at 6% of Total Contract Price will be charged, subject to adjustments at the time of title transfer. These shall cover pertinent national and local government fees and charges, including, but not limited to, documentary stamp tax, notarial fees, transfer taxes, registration fees and other expenses connected with the execution of the Deed of Absolute Sales and the issuance or transfer of the corresponding Condominium Certificate of Title, as well as Condominium Corporation Membership fees and creditable condominium dues, and utility bonds (if applicable).

February 5, 2024 12:26 PM

**Unit Information**

Tower	AZALEA PLACE	Total Floor Area	43.50 sqm
Floor	2nd	Condominium Area	43.50 sqm
Unit	Unit 020	Balcony Area	0
Unit Status	Available	Garden Area	0
Unit Type	2 BR		

UNIT GROSS PRICE		8,366,175.00
	Other Discounts	15% (1,254,926.25)
		7,111,248.75
Closing Fees (Unit)		426,674.92
Total Net Unit Price		7,537,923.67

**Payment Schedule**

	Percentage	No. of Payments
Spot Payment	5%	1 month(s)
Monthly Amortization	15%	21 month(s)
Balance	80%	23rd month
	100%	

<b>Date</b>	<b>Payment</b>	<b>Unit</b>	<b>Closing Fees</b>	<b>Total</b>
05-Feb-24	RF	80,000.00	0.00	80,000.00
06-Mar-24	SPOT	275,562.44	0.00	275,562.44
16-Apr-24	MA1	50,794.63	0.00	50,794.63
16-May-24	MA2	50,794.63	0.00	50,794.63
16-Jun-24	MA3	50,794.63	0.00	50,794.63
16-Jul-24	MA4	50,794.63	0.00	50,794.63
16-Aug-24	MA5	50,794.63	0.00	50,794.63
16-Sep-24	MA6	50,794.63	0.00	50,794.63
16-Oct-24	MA7	50,794.63	0.00	50,794.63
16-Nov-24	MA8	50,794.63	0.00	50,794.63
16-Dec-24	MA9	50,794.63	0.00	50,794.63
16-Jan-25	MA10	50,794.63	0.00	50,794.63
16-Feb-25	MA11	50,794.63	0.00	50,794.63
16-Mar-25	MA12	50,794.63	0.00	50,794.63
16-Apr-25	MA13	50,794.63	0.00	50,794.63
16-May-25	MA14	50,794.63	0.00	50,794.63
16-Jun-25	MA15	50,794.63	0.00	50,794.63
16-Jul-25	MA16	50,794.63	0.00	50,794.63
16-Aug-25	MA17	50,794.63	0.00	50,794.63
16-Sep-25	MA18	50,794.63	0.00	50,794.63
16-Oct-25	MA19	50,794.63	0.00	50,794.63
16-Nov-25	MA20	50,794.63	0.00	50,794.63
16-Dec-25	MA21	50,794.63	426,674.92	477,469.56
05-Jan-26	BALANCE	5,688,999.00	0.00	5,688,999.00

TOTAL	PHP 7,111,248.75	PHP 426,674.92	PHP 7,537,923.67
-------	------------------	----------------	------------------

Remarks

1. The Developer reserves the right to make corrections resulting from typographical errors.
2. All prices, availability, payment schemes & other details are subject to change without prior notice.
3. All unit areas are approximates and will be finalized during time of turnover.
4. Discounts are conditioned upon buyer's compliance with his obligations including payments & documents.
5. Closing Fees, which are estimated at 6% of Total Contract Price will be charged, subject to adjustments at the time of title transfer. These shall cover pertinent national and local government fees and charges, including, but not limited to, documentary stamp tax, notarial fees, transfer taxes, registration fees and other expenses connected with the execution of the Deed of Absolute Sales and the issuance or transfer of the corresponding Condominium Certificate of Title, as well as Condominium Corporation Membership fees and creditable condominium dues, and utility bonds (if applicable).