



TYPICAL FLOOR LAYOUT 1

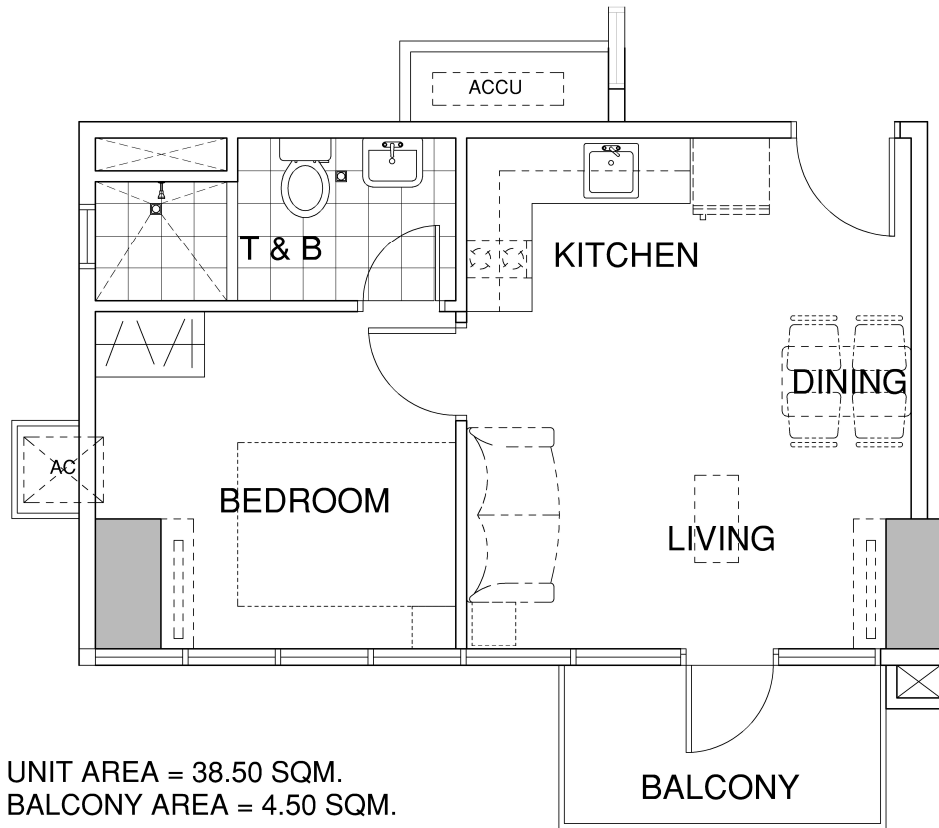
@ 3rd, 5th, 7th, 9th, 11th, 14th, 16th, 18th, 20th, 22nd, 24th, 26th



While every care has been taken in preparing this material, all plans, details and specifications contained herein are subject to change without prior notice and do not constitute part of any offer or contract. No warranty or representation is made by the Developer as to their accuracy. Furthermore, the Developer reserves the right to alter, deviate or dispense with the plans and specifications referred to herein to comply with certain building requirements such as but not limited to structural, mechanical, electrical, sanitary and plumbing requirements. In the event of alteration or deviation with the plans and specifications referred to herein, the Developer shall be rendered free and harmless from any liability arising therefrom. Furniture, appliances and equipment indicated herein are for illustrative purpose only and are not included in the deliverables.

Some views may currently be unobstructed. However, the Developer does not guarantee unobstructed views due to possible future developments in the neighboring lots.
 All drawings are not to scale.

ROBINSONS LAND CORPORATION
 DATE ISSUED: JANUARY 1, 2015
 This supersedes AUGUST 18, 2011 Keyplan.

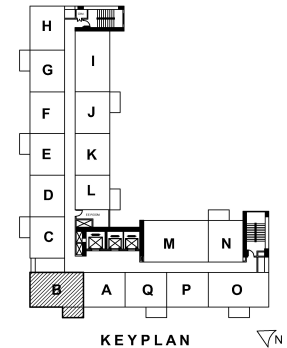


UNIT AREA = 38.50 SQM.
 BALCONY AREA = 4.50 SQM.
 TOTAL AREA = 43.00 SQM.

**TYPICAL FLOOR LAYOUT 1
 UNIT B (1 BEDROOM WITH BALCONY)**

While every care has been taken in preparing this material, all plans, details and specifications contained herein are subject to change without prior notice and do not constitute part of any offer or contract. No warranty or representation is made by the Developer as to their accuracy. Furthermore, the Developer reserves the right to alter, deviate or dispense with the plans and specifications referred to herein to comply with certain building requirements such as but not limited to structural, mechanical, electrical, sanitary and plumbing requirements. In the event of alteration or deviation with the plans and specifications referred to herein, the Developer shall be rendered free and harmless from any liability arising therefrom. Furniture, appliances and equipment indicated herein are for illustrative purpose only and are not included in the deliverables.

Some views may currently be unobstructed. However, the Developer does not guarantee unobstructed views due to possible future developments in the neighboring lots. All drawings are not to scale.



February 5, 2024 12:27 PM

Unit Information

Tower	AZALEA PLACE	Total Floor Area	43.00 sqm
Floor	14th	Condominium Area	38.50 sqm
Unit	Unit 14B	Balcony Area	4.50
Unit Status	Available	Garden Area	0
Unit Type	1 BR		

UNIT GROSS PRICE		8,440,026.00
	Other Discounts	15% (1,266,003.90)
		7,174,022.10
Closing Fees (Unit)		430,441.33
Total Net Unit Price		7,604,463.43

Payment Schedule

	Percentage	No. of Payments
Spot Payment	10%	3 month(s)
Monthly Amortization	10%	19 month(s)
Balance	80%	23rd month
	100%	

Date	Payment	Unit	Closing Fees	Total
05-Feb-24	RF	40,000.00	0.00	40,000.00
05-May-24	SPOT	677,402.21	0.00	677,402.21 (225,800.74)
16-Jun-24	MA1	37,758.01	0.00	37,758.01
16-Jul-24	MA2	37,758.01	0.00	37,758.01
16-Aug-24	MA3	37,758.01	0.00	37,758.01
16-Sep-24	MA4	37,758.01	0.00	37,758.01
16-Oct-24	MA5	37,758.01	0.00	37,758.01
16-Nov-24	MA6	37,758.01	0.00	37,758.01
16-Dec-24	MA7	37,758.01	0.00	37,758.01
16-Jan-25	MA8	37,758.01	0.00	37,758.01
16-Feb-25	MA9	37,758.01	0.00	37,758.01
16-Mar-25	MA10	37,758.01	0.00	37,758.01
16-Apr-25	MA11	37,758.01	0.00	37,758.01
16-May-25	MA12	37,758.01	0.00	37,758.01
16-Jun-25	MA13	37,758.01	0.00	37,758.01
16-Jul-25	MA14	37,758.01	0.00	37,758.01
16-Aug-25	MA15	37,758.01	0.00	37,758.01
16-Sep-25	MA16	37,758.01	0.00	37,758.01
16-Oct-25	MA17	37,758.01	0.00	37,758.01
16-Nov-25	MA18	37,758.01	0.00	37,758.01
16-Dec-25	MA19	37,758.01	430,441.33	468,199.34
05-Jan-26	BALANCE	5,739,217.68	0.00	5,739,217.68

TOTAL	PHP 7,174,022.10	PHP 430,441.33	PHP 7,604,463.43
-------	------------------	----------------	------------------

Remarks

1. The Developer reserves the right to make corrections resulting from typographical errors.
2. All prices, availability, payment schemes & other details are subject to change without prior notice.
3. All unit areas are approximates and will be finalized during time of turnover.
4. Discounts are conditioned upon buyer's compliance with his obligations including payments & documents.
5. Closing Fees, which are estimated at 6% of Total Contract Price will be charged, subject to adjustments at the time of title transfer. These shall cover pertinent national and local government fees and charges, including, but not limited to, documentary stamp tax, notarial fees, transfer taxes, registration fees and other expenses connected with the execution of the Deed of Absolute Sales and the issuance or transfer of the corresponding Condominium Certificate of Title, as well as Condominium Corporation Membership fees and creditable condominium dues, and utility bonds (if applicable).

February 5, 2024 12:27 PM

Unit Information

Tower	AZALEA PLACE	Total Floor Area	43.00 sqm
Floor	14th	Condominium Area	38.50 sqm
Unit	Unit 14B	Balcony Area	4.50
Unit Status	Available	Garden Area	0
Unit Type	1 BR		

UNIT GROSS PRICE		8,440,026.00
	Other Discounts	15% (1,266,003.90)
		7,174,022.10
Closing Fees (Unit)		430,441.33
Total Net Unit Price		7,604,463.43

Payment Schedule

	Percentage	No. of Payments
Spot Payment	5%	1 month(s)
Monthly Amortization	15%	21 month(s)
Balance	80%	23rd month
	100%	

Date	Payment	Unit	Closing Fees	Total
05-Feb-24	RF	40,000.00	0.00	40,000.00
06-Mar-24	SPOT	318,701.10	0.00	318,701.10
16-Apr-24	MA1	51,243.01	0.00	51,243.01
16-May-24	MA2	51,243.01	0.00	51,243.01
16-Jun-24	MA3	51,243.01	0.00	51,243.01
16-Jul-24	MA4	51,243.01	0.00	51,243.01
16-Aug-24	MA5	51,243.01	0.00	51,243.01
16-Sep-24	MA6	51,243.01	0.00	51,243.01
16-Oct-24	MA7	51,243.01	0.00	51,243.01
16-Nov-24	MA8	51,243.01	0.00	51,243.01
16-Dec-24	MA9	51,243.01	0.00	51,243.01
16-Jan-25	MA10	51,243.01	0.00	51,243.01
16-Feb-25	MA11	51,243.01	0.00	51,243.01
16-Mar-25	MA12	51,243.01	0.00	51,243.01
16-Apr-25	MA13	51,243.01	0.00	51,243.01
16-May-25	MA14	51,243.01	0.00	51,243.01
16-Jun-25	MA15	51,243.01	0.00	51,243.01
16-Jul-25	MA16	51,243.01	0.00	51,243.01
16-Aug-25	MA17	51,243.01	0.00	51,243.01
16-Sep-25	MA18	51,243.01	0.00	51,243.01
16-Oct-25	MA19	51,243.01	0.00	51,243.01
16-Nov-25	MA20	51,243.01	0.00	51,243.01
16-Dec-25	MA21	51,243.01	430,441.33	481,684.34
05-Jan-26	BALANCE	5,739,217.68	0.00	5,739,217.68

TOTAL	PHP 7,174,022.10	PHP 430,441.33	PHP 7,604,463.43
-------	------------------	----------------	------------------

Remarks

1. The Developer reserves the right to make corrections resulting from typographical errors.
2. All prices, availability, payment schemes & other details are subject to change without prior notice.
3. All unit areas are approximates and will be finalized during time of turnover.
4. Discounts are conditioned upon buyer's compliance with his obligations including payments & documents.
5. Closing Fees, which are estimated at 6% of Total Contract Price will be charged, subject to adjustments at the time of title transfer. These shall cover pertinent national and local government fees and charges, including, but not limited to, documentary stamp tax, notarial fees, transfer taxes, registration fees and other expenses connected with the execution of the Deed of Absolute Sales and the issuance or transfer of the corresponding Condominium Certificate of Title, as well as Condominium Corporation Membership fees and creditable condominium dues, and utility bonds (if applicable).